

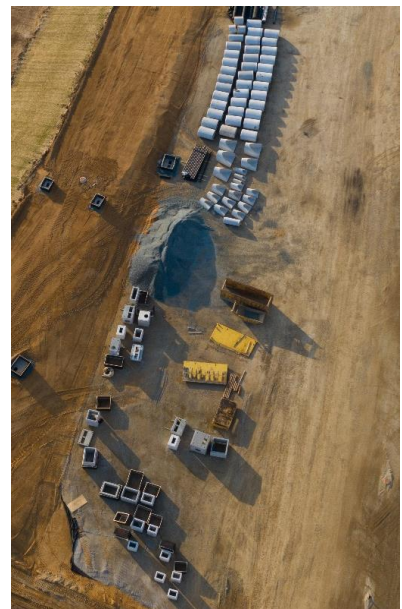


RINKER MATERIALS® MANAGES STORMWATER AT NEW DELAWARE CITY LOGISTICS PARK

Delaware City Logistics Park is a new two million-square-foot modern distribution and fulfillment park that enables corporate tenants to serve millions of customers across the Eastern United States and Canada every day. Strategically located south of Wilmington near the fragile Delaware River Watershead, a robust stormwater management system from Rinker Materials® was installed by Corrado Construction to protect the 190-acre property and four-building campus from flooding.

The \$136-million project owned by Northpoint Development features a stormwater management system designed by Duffield and Associates that was constructed using a combination of round and elliptical reinforced concrete pipe (RCP). Nearly 9,000 linear feet of round RCP ranging in diameter from 12” to 54”, and 29” x 45” through 38” x 60” elliptical RCP make up the drainage system, which will easily accommodate the 45” of annual rain and one foot of annual snow in the area each year.

“Although initially requested as HDPE (high-density polyethylene pipe), several long and critical pipe runs were



Rinker Delaware City Logistics Park – Page 2

switched to RCP just prior to starting,” said Richard Scrivener, project manager at Corrado Construction. “Rinker was very responsive to these changes and got us the material we needed quickly, allowing us to stay ahead of the winter weather on a time-sensitive project. The large scale and short timeline of this project was challenging, but the Rinker team was critical in getting the job completed on schedule and on budget. They were accommodating to the changing needs of our crews as weather and sequencing adjustments came up, and they made sure we could always keep going.”

Anchored by its largest tenant DART Container, manufacturer of Solo cups, Delaware City Logistics Park is expected to employ around 800 people when fully leased. Approximately 43 percent of the U.S. and 53 percent of Canada residents can be reached by truck in one day from Delaware City Logistics Park.

“We saw this property as a unique opportunity to capitalize on the positive momentum of the regional market and the limited supply of sites to accommodate large scale development. The strategic location and access to a plentiful and capable workforce provides a terrific opportunity for the modern industrial occupiers whose demands we are building to meet,” said Johan Henrikson, vice president of development with Northpoint, in a statement when the deal was announced.

