

**Reinforced Concrete Pipe
 O-Ring Joint
 12" - 96" Diameter**

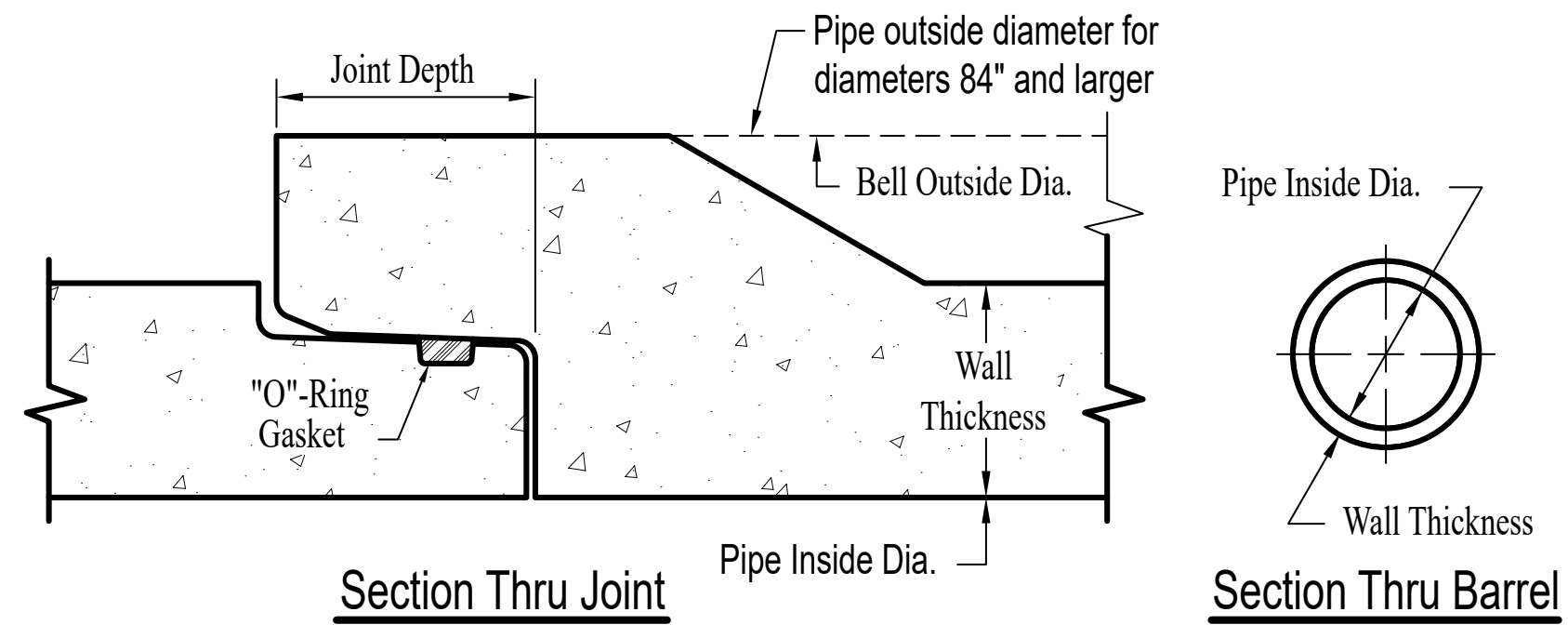


Table of Dimensions and Weights

Pipe Inside Diameter (Inches)	Wall Thickness (Inches)	Joint Depth (Inches)	Bell Outside Diameter (Inches)	Length (Feet)	Weight (Lbs./Ft.)
12	2	4 5/8	23	6	120
15	2 1/4	4 5/8	26	6, 8	155
18	2 1/2	4 5/8	29	6, 8	175
21	2 3/4	4 5/8	32	6, 8	225
24	3	4 5/8	35	6, 8	290
27	3 1/4	4 5/8	38 3/4	6, 8	350
30	3 1/2	4 5/8	42 1/4	8, 12	410
33	3 3/4	4 3/4	46 3/4	8, 12	480
36	4	4 7/8	50 1/4	8, 12	563
39	4 1/4	5	54	8, 12	645
42	4 1/2	5 1/4	58	8, 12	745
48	5	5 1/2	64	8, 12	920
54	5 1/2	5 1/2	70	8, 12	1125
60	6	5 1/2	76	8, 12	1340
66	6 1/2	5 1/2	82	8, 12	1580
72	7	5 1/2	88	8, 12	1840
78	7 1/2	5 1/2	94	8, 12	2110
84	8	5 3/4	100	8, 12	2410
90	8 1/2	6 1/8	107	8, 12	2740
96	9	6 5/8	114	8, 12	3095

Pipe dimensions may vary depending upon equipment availability.

Notes:

1. Pipe manufactured to meet current ASTM specifications.
2. Pipe diameters larger than 96" are available.
3. Contact a Concrete Pipe Division representative for details not listed on this sheet.