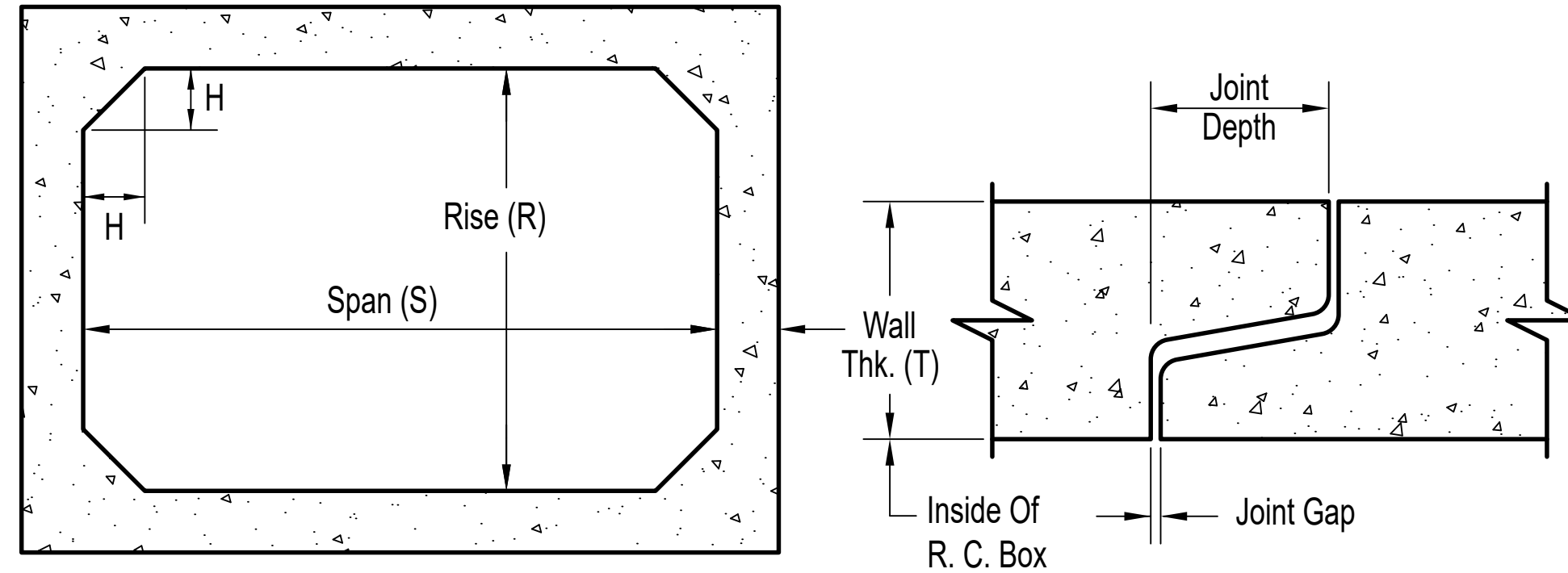


**Reinforced Concrete Box Culvert**



Section thru Box Culvert

Section thru Box Joint

		Standard Box Culvert Weights (lbs.) per Foot										
		Span (S)										
Rise (R)		3	4	5	6	7	8	9	10	11	12	
	2	605	905									
	3	705	1025	1425	1885	2410						
	4		1155	1575	2060	2600	2800			4880	5700	
	5			1725	2235	2800	3000	3655	4375			
	6				2410	3000	3200	3885	4625	5430	6300	
	7					3200	3400	4105	4875			
	8						3600	4335	5125	5980	6900	
	9							4555	5375			
	10								5625	6530	7500	
	11									6810		
	12										8100	
Wall (T)		4	5	6	7	8	8	9	10	11	12	
Haunch (H)		7	7,8	7,8	7,8,12	8,12	8,12	12	12	12	12	

Notes: Box dimensions may vary depending upon equipment availability.

1. Produced to meet ASTM Specifications.
2. Contact a Concrete Pipe Division representative for details not listed on this sheet.
3. Walls, Slabs and Haunches are designed to meet ASTM / AASHTO standards and project specifications.